

MARCH 1, 2024

atlas INSIDER



ANCHOR-LOK IN WWTP NEW CONSTRUCTION

Atlas Thermoplastic linings can be found in an array of Industrial applications. ANCHOR-LOK has been successfully installed in Chemical plants, Manufacturing plants, Steel mills and processing plants, Battery Manufacturing Facilities, as well as Pharmaceutical Facilities just to name a few.

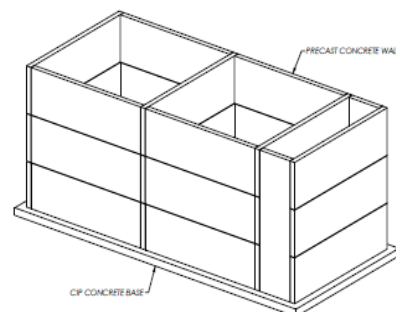
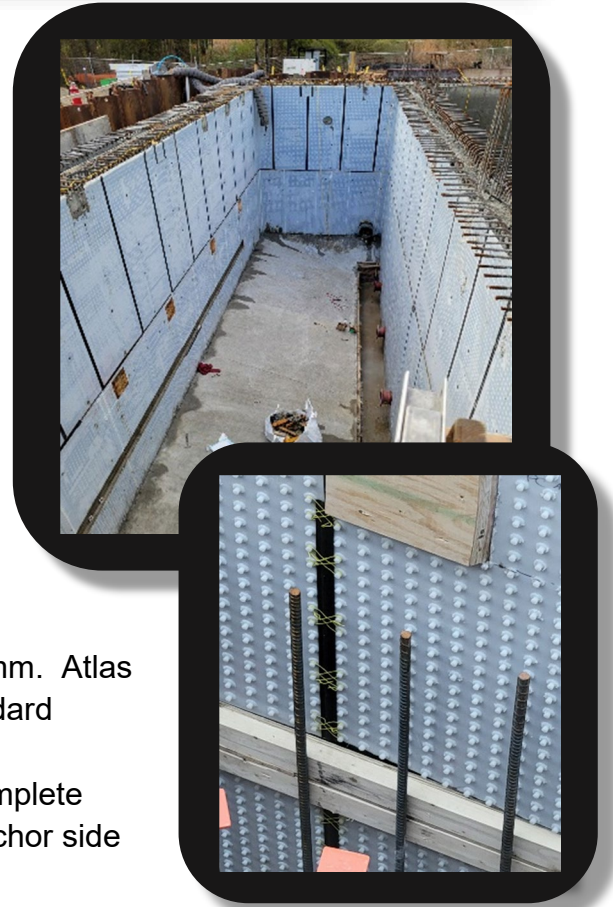
ANCHOR-LOK can be fabricated to be installed in new and existing trenches, collection sumps, containment pits or basins, or custom designed to accommodate an even wider array of unique configurations for corrosion protection.

One such application being utilized more and more today by Atlas is in the Water and Wastewater Treatment arena for Storage Tanks, Pump Stations, Lift Stations, and Wet Wells.

ANCHOR-LOK standard thicknesses of sheet are 3mm and 5mm. Atlas utilizes our 3mm HDPE Natural grade of material to meet standard design specifications. This meets the required benefit of being translucent, allowing for a quick and thorough inspection of complete concrete saturation around and through the anchors on the anchor side of the sheet.

ANCHOR-LOK has excellent chemical, thermal and abrasion resistance and withstands external hydraulic pressure well in excess of a 100 ft. (30 m.) head pressure.

ANCHOR-LOK can also be utilized for Pre-Cast panels used in Digesters, Sludge Storage Tanks, and Clarifiers where the material is set into the precast panel formwork, the concrete is poured and cured, the forms are stripped, and the panels are shipped and set to place. Once the panels are set, the field crew welds and spark tests the seams to verify a leak-proof structure.



ANCHOR-LOK also has the ability through it's lifespan to be re-verified as 100% positive containment when an inspection is necessary, or during the recommended timeframe for inspection. The procedure consists of a thorough cleaning using high pressure water, certified personnel re-spark test the welds, and re-certify the structure as leak-proof.

For a more indepth and detailed review of Atlas Minerals & Chemicals ANCHOR-LOK product, please visit our dedicated website @ www.atlasmin.com/thermoplastic-linings.