

MAY 1, 2024

atlas INSIDER



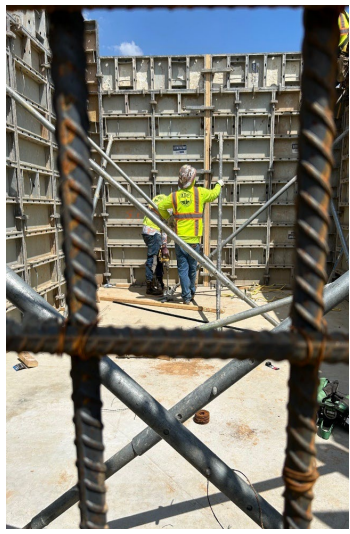
Laying The Foundation For a NEW Steel Facility

Located in the heart of Appalachia, the largest domestic supplier of steel decided to build a new plant sprawling over 1700 acres. At over **3 billion dollars**, it is their largest investment to date. The new mill will have the capacity to produce up to 3 million tons of steel sheet per year and be one of the most technologically advanced sheet mills. It will also have one of the lowest carbon footprints of any sheet mill in the world.



So, what does that company want to use to protect one of its larger sumps off its pickling line? **Anchor Lok, of course.** The sump measured approx. 21 ft. long by 15 ft. wide and just over 10 ft. deep. It was one of the first items placed in that area. They will use this sump to help with the many trenches that will go in and around their pickling unit. Those trenches and surrounding areas totaling just over 16,000 sq ft. will be coated with **Chempruf 121**. The Anchor Lok sump was also embedded with a fabric face to help with the transition from coating to plastic. This was a differentiating factor that Atlas could provide to make sure everything would flow seamlessly into the collection basin.

The company also took advantage of Atlas's expertise in installation. They made sure that there was an **"Atlas Technical Supervisor"** onsite as the pour and placement of the Anchor Lok was done. Not only did it streamline the process, but it created confidence and assurance that the product would be placed correctly. Many questions were answered before the process was completed. A game plan was developed and the time from excavation to having the sump installed was just under a week. This kept them in line with their tight schedule and allowed them to move on to other sections of the facility.



Overall, it was a great installation, and we look forward to completing the coating side of this project after the concrete is poured and the building is erected.